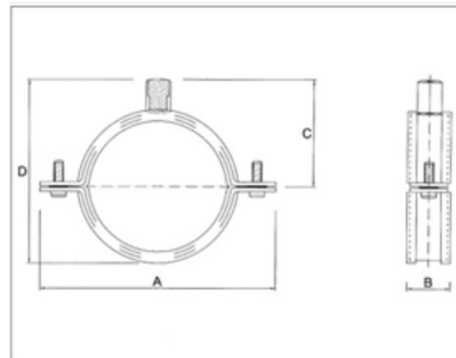


GLOBE

CLAMPS



GLOBE - RUBBER LINED SPLIT CLAMPS



Construction Features

- Strengthened lock bolts for high load capacity
- Can be used for both horizontal and vertical installations.
- EPDM lining for suppression of sound and vibrations.
- Lock bolts with combi cross recessed head.
- M6 side screws with PE captive disc Unique Grooved Construction for added strength.

Technical Data

Welded Nut M8/M10 with option of M10/M12
Electrogalvanized 16 microns as per
ASTM A 90-90M:1995
Safe and Break Loads as per Chart
M6 Side Nuts can be provided on request

Size Inches	Dia mm	Range mm	Dimension (mm)				Thickness mm	Safe Load Kgs	Break Load Kgs
			A	B	C	D			
3/8"	15	15 - 19	60	20	26	36	1.6	450	0
1/2"	22	20 - 25	65	20	29	43	1.6	450	150
3/4"	26	26 - 30	70	20	32	50	1.6	450	150
1"	35	32 - 36	85	20	36	56	1.6	450	150
1 1/4"	42	38 - 42	92	20	39	63	1.6	450	15
1 1/2"	48	47 - 51	98	20	42	69	1.6	450	150
-	54	53 - 58	104	20	45	75	1.6	450	150
2"	60	60 - 64	110	20	48	81	1.6	450	150
-	63	63 - 66	115	20	51	85	1.6	450	150
-	70	68 - 72	120	20	53	91	1.6	450	150
2 1/2"	75	74 - 80	125	20	56	96	1.6	450	150
-	83	81 - 86	139	20	60	104	2	600	200
3"	90	87 - 92	146	20	63	111	2	600	200
3 1/2"	100	99 - 105	156	20	68	121	2	600	200
-	110	107 - 112	166	20	73	131	2	600	200
4"	115	113 - 118	171	20	76	136	2	600	200
-	125	125 - 130	181	20	81	146	2	600	200
-	133	131 - 137	189	20	85	154	2	600	200
5"	140	138 - 142	196	20	88	161	2	600	200
-	150	148 - 153	206	20	93	171	2	600	200
-	160	159 - 166	216	25	98	181	2	600	200
6"	168	168 - 172	224	25	102	189	2	600	200
8"	200	200 - 212	256	25	118	221	2	600	200
-	220	215 - 220	276	25	128	241	2	600	200
10"	250	269 - 274	306	25	143	271	2	600	200
12"	315	313 - 318	371	25	176	336	2	600	200

GLOBE - RUBBER LINED SPLIT CLAMPS

Model Selection of Lined Clamps for Different Types of Pipes

Copper mm	Steel (Sch 40)		UPVC / PE	ABS
	Inches	mm		
15,18		16		
22	1/2"	22	20	DN15 (21.4)
24, 28	3/4"	28	25	DN20 (26.8)
35	1"	35	32, 36	DN25 (33.6)
42	1 1/4"	42	40, 43	DN32 (42.3)
	1 1/2"	48	45	DN40 (48.3)
54			54	
64	2"	60	60	DN50 (60.4)
67, 70			70	
76	2 1/2"	75	75	DN65 (75.4)
80			83	
	3"	90	90	
102, 105			102	DN80 (88.9)
108			110	
	4"	115	115	DN100 (114.3)
125			125	
			135	
	5"		140	DN125 (140.2)
		140	152	
159			160	
167	6"	168		DN150 (168.3)
206			200	
	8"	219	220, 225	DN200 (225.0)
			250	DN225 (250.4)
				DN300 (315.5)