

Plastic Overflow Pipe and Fittings

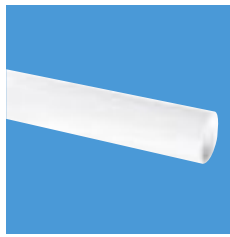
SECTION

4



Plastic Overflow Pipe and Fittings

3/4" Overflow Pipe, Pushfit and Universal Fittings



Code

HDPE White Overflow Pipe
3/4" x 3m lengths

R-3M



Straight Connectors

3/4" pushfit **R1**
19/23mm universal
compression connections
R1M



Straight Connector with
universal compression
connections for 19/23mm
rigid pipe and 25mm
flexible pipe

R1M-CO



90° Bends

3/4" pushfit **R2**
19/23mm universal
compression connections
R2M



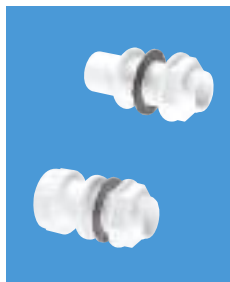
135° Bends

3/4" pushfit **R2A**
19/23mm universal
compression connections
R2AM



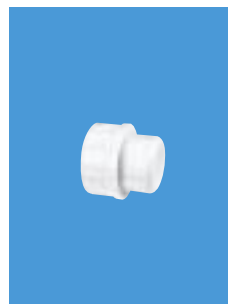
Tees

3/4" pushfit **R3**
19/23mm universal
compression connections
R3M



Straight Tank Connectors

3/4" pushfit **R4**
19/23mm universal
compression connections
R4M



Code

Blanking Cap for overflow
pipe with 19/23mm
universal compression
connection

R23U



Bent Tank Connectors

3/4" pushfit **R5**
19/23mm universal
compression connections
R5M



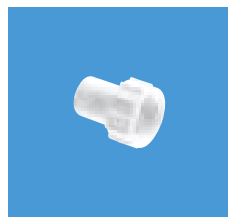
Straight Female Coupling
with fixed nut

R6



Straight Female Coupling
with loose nut

R6A



Straight Female Coupling
with fixed nut for
converting male BSP outlets
to pushfit fittings

R7



90° Female Coupling with
loose nut

R8A



ABS Adaptor to convert
19mm connections up to
23mm OD pipe

R13



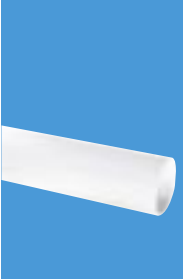
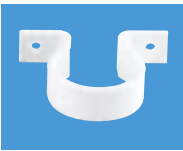





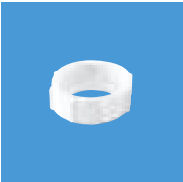

Reducer in ABS 1 1/4" plain tail
to BS EN 1329-1:2000 x
19/23mm universal
compression connection

R16



Reducer in ABS 1 1/2" plain tail
to BS EN 1329-1:2000 x
19/23mm universal
compression connection

R17

	1 1/4" Code	1 1/2" Code
	HDPE White Pipe 3m lengths	
	HD1-3M	HD2-3M
	Pipe Clip	
	S30	T30
	90° Bend	
	S4A	T4A
	90° Knuckle Bend	
	S4E	T4E
	90° Bend x BSP coupling nut	
	S5	T5
	Straight Connector	
	S18	T18
	Adaptor	
	S7	T7
	BSP Nut ordinary	
	S8A	T8A
	BSP Screwed Adaptor	
	S9	T9

Standing Waste Backnut Model



All standing wastes are supplied with backnut and washers
 Standard length of stand pipe 18"

When ordering state:
 (1) Code
 (2) Height required if not 18"

1 1/4" x 70mm flange x 3 1/2" tail
 Code **SWL-18**

1 1/2" x 70mm flange x 3 1/2" tail
 Code **TWL-18**

1 1/4" x 70mm flange x 1 1/2" tail
 Code **SWS-18**

1 1/2" x 70mm flange x 1 1/2" tail
 Code **TWS-18**

Tank Overflow



Unslotted Waste without Grid

1 1/4" x 70mm flange x 3 1/2" tail
 Code **W10**

1 1/2" x 70mm flange x 3 1/2" tail
 Code **W20**

1 1/4" x 70mm flange x 1 1/2" tail
 Code **W11**

1 1/2" x 70mm flange x 1 1/2" tail
 Code **W21**

Water Storage Cistern Fittings (Ex Bye-law 30 Fittings)



3/4" Code	1" Code	1 1/4" Code	1 1/2" Code	2" Code
--------------	------------	----------------	----------------	------------

Complete Screened Tank Overflow Connector with quick release filter - standard model

R30	H28	R40	R45	-
------------	------------	------------	------------	---



Complete Screened Tank Overflow Connector with quick release filter - extended model

R30E	-	R40E	R45E	-
-------------	---	-------------	-------------	---



Screened Tank Breather

R31	-	SWLFBR	TWLFBR	ZWLFBR
------------	---	---------------	---------------	---------------



Screened Breather/Filter with universal compression connection to pipe

R32	-	-	-	-
------------	---	---	---	---



Tank Lid Adaptor for expansion pipe

R33	-	-	-	-
------------	---	---	---	---



Tank Connector

R4M	H11M	S11M	T11M	Z11M
------------	-------------	-------------	-------------	-------------



3/4" Code	1" Code	1 1/4" Code	1 1/2" Code	2" Code
--------------	------------	----------------	----------------	------------

Complete 3/4" BL30 Kit comprising R30, R31, R33

BL30-3/4	-	-	-	-
-----------------	---	---	---	---



Screened Breather/Filter/Frost Cover with universal compression connection to pipe

-	-	SWLFCV	TWLFCV	-
---	---	---------------	---------------	---



In-Line Screened/Filter Pipe Coupling

RWILF	HWILF	SWILF	TWILF	ZWILF
--------------	--------------	--------------	--------------	--------------



Frost Protection Dip Tube Bend
Connect pipe to provide length of dip tube required

-	-	S5	T5	-
---	---	-----------	-----------	---



90° Multifit x Plain End

-	-	MS4L	MT4L	MZ4L
---	---	-------------	-------------	-------------



90° Multifit Bend

-	-	MS4	MT4	MZ4
---	---	------------	------------	------------

Tundishes and Non-Return Valves

Tundishes



Tundish with 3/4" pushfit outlet

Code

TUN-1



Tundish with 19/23mm universal compression outlet

TUN-2



One-Piece Side Inlet Tundish with 19/23mm universal compression outlet

TUN-3



One-Piece Tundish with 3/4" loose nut inlet x 19/23mm universal compression outlet

TUN-4



One-Piece Tundish with 19/23mm universal compression inlet x 1 1/4" universal compression outlet

TUN-6

Non-Return Valves for WC Overflow



Tunvalve (Clear) with 3/4" female threaded inlet connection to WC overflow outlet x 19/23mm universal compression outlet

Code

TUNVALVE



Tunvalve Straight Through (Clear) with 19/23mm universal compression connections

Code

TUN5-CL

In-Line Non-Return Valves



Non-Return Valve with 19/23mm universal compression connections

Code

R28-NRV



90° Elbow with integral Non-Return Valve. Plain tail inlet x 19/23mm universal compression outlet

Code

R29-NRV



Convalve Non-Return Valve with 1 1/4" universal compression connections

Code

CONVALVE-125



Convalve Non-Return Valve with 1 1/4" plain tail x 1 1/4" universal compression outlet

Code

CONVALVE-125P

Tundishes with Non-Return Valve

The only combined tundish and non-return valve with a silicone membrane seal ensuring it will not be affected in hard water areas.

- MACTUN incorporates a self closing membrane which opens to allow discharge to flow freely and then closes to form a seal. This prevents foul odour or sewer gas entering the building when installed into a waste or soil pipe
- The membrane seal has no spring mechanism and shall not be affected in hard water areas
- The membrane seal creates no resistance to the discharge flow from PRV/TRV valve preventing any splashing. There is no need to purchase a separate splash shield
- Temperature rating 100°C
- The product is generally maintenance free. If required the top tundish window can be removed from the MACTUN body for inspection or cleaning when maintenance work is being carried out
- Suitable for use on Cylinders, Boilers, Water Heaters, PRV Valves, Condensate and Air Conditioning Units



Tundish Tunvalve with
15mm compression inlet x
22mm compression outlet

Code **MACTUN-1**



Tundish Tunvalve with
15/22mm compression
inlet x 1¼" universal
compression outlet

Code **MACTUN-2**

WC Overflow Kits with Tundish - Overflow into Flush Pipe

- Before installation relaxation of Bye-law 84 is required by local water authority



WC Overflow Kit comprises TUN-2, V33T, 90° pushfit elbow and two 3/4" x 12" lengths of overflow pipe †

Code **TUNKIT-1**

WC Overflow Kit comprises TUN-3, V33T, 90° pushfit elbow and two 3/4" x 12" lengths of overflow pipe †

Code **TUNKIT-3**

† Not suitable for use with high level cisterns as installation into external flush pipe would cause malfunction of the syphonic flushing action

Tee Pieces



Tee Piece 1 1/2" BSP nut x 1 1/4" universal compression connection x 19/23mm universal compression connection †

Code **V33T**



Tee Piece with 1 1/4" x 1 1/4" universal compression connection to flush pipe at both ends x 19/23mm universal compression connection †

Code **V33T-FP**



Tee Piece 1 1/2" BSP nut x 1 1/2" BSP thread x 19/23mm universal compression connection †

Code **V335-22**

† Not suitable for use with high level cisterns as installation into external flush pipe would cause malfunction of the syphonic flushing action



Code **TUN-6**

Code **TUNVALVE**